

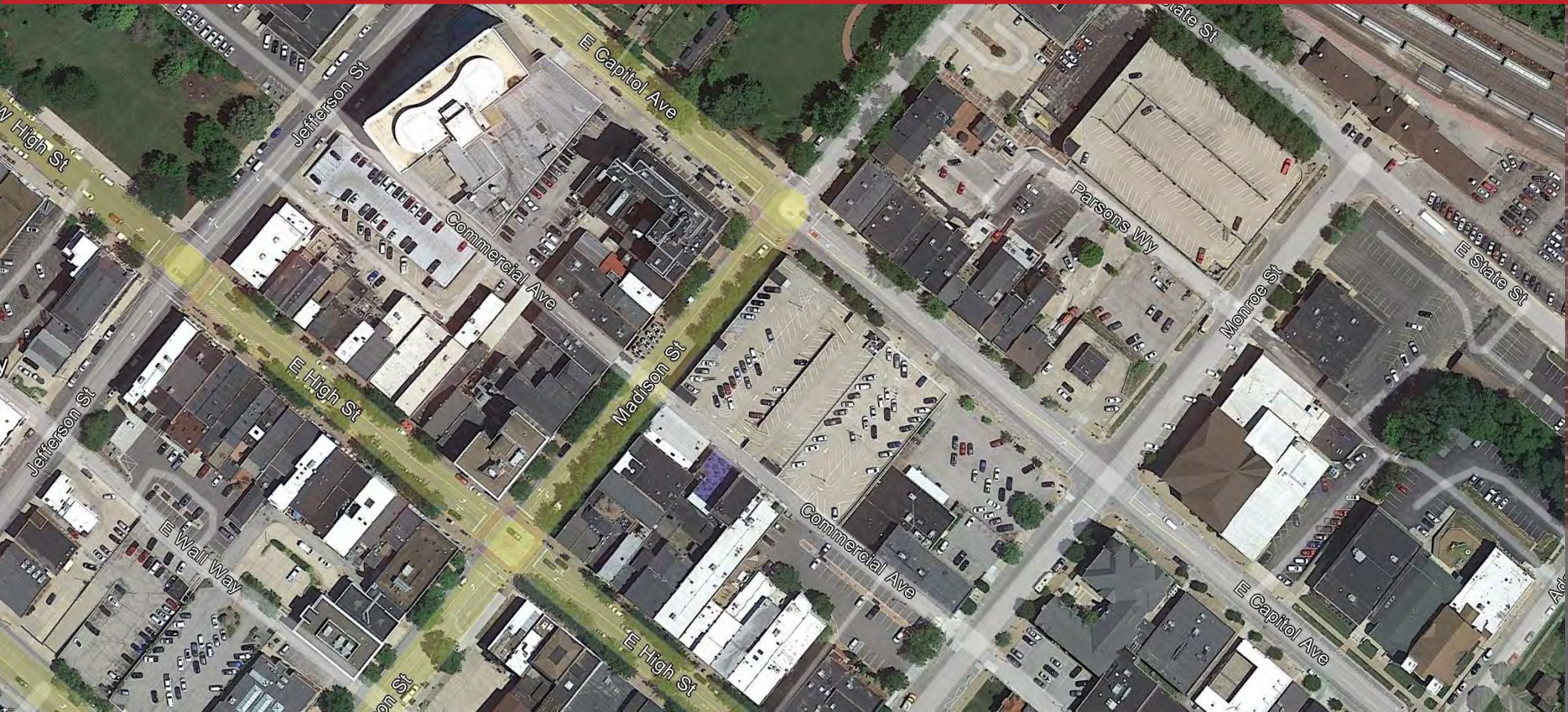


FACET
ARCHITECTURAL DESIGN

**JEFFERSON CITY CONFERENCE CENTER
FINAL DESIGN CONCEPT
AUGUST 21, 2023**



JEFFERSON CITY
Regional Economic Partnership



INTRODUCTORY LETTER

Hello-

The FACET Architectural Design team would like to take this opportunity to thank the Jefferson City Convention & Visitors Bureau and the Jefferson City Regional Economic Partnership teams for giving us the opportunity to collaborate with you all on the design of your downtown conference center proposal. We have been and remain eager to apply our extensive experience and skills to this dynamic opportunity. FACET AD is committed to providing the Bureau with an exciting, fresh, high-quality, and responsive architectural design. Along with our entire umbrella of companies, you can be assured that the FACET AD team will provide a cohesive and coordinated project that the Bureau & the Partnership can be proud to share with the larger community.

The FACET AD design team has worked successfully in Missouri and the Jefferson City area with many members of the community on multiple projects, of varying types and scales, and we all look forward to continuing and developing those relationships over the course of the conference center concept proposal timeline. The project is professionally rewarding for our team, and we are grateful for and excited by the opportunity to enhance the architectural landscape of Jefferson City, and to improve the experiences of your community.

Your Design Team-



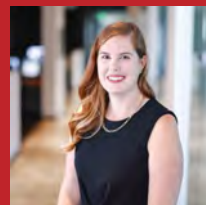
Mike Sundermeyer AIA
Project Manager



Suzanne Hayes AIA
Project Architect



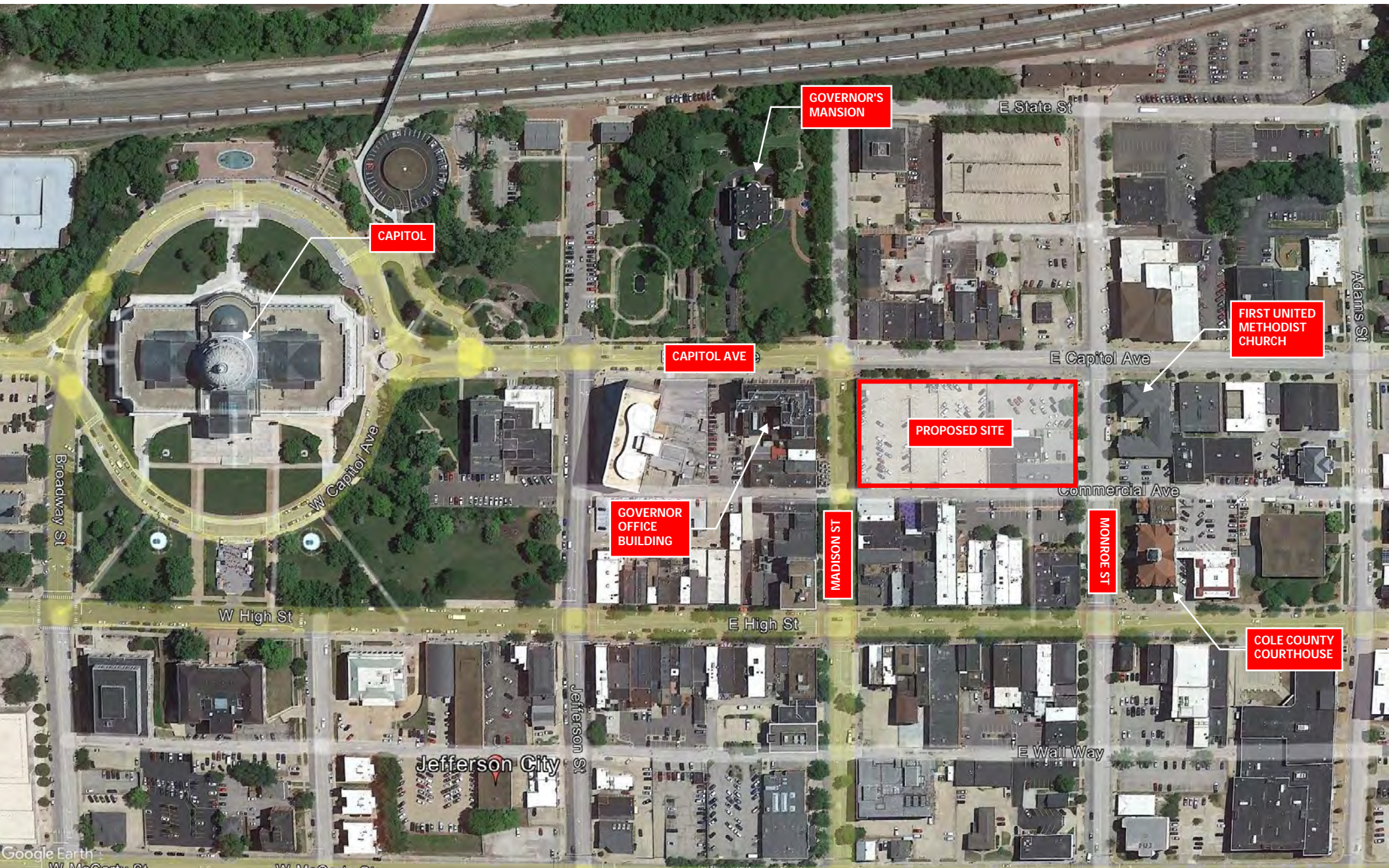
Carl P. Karlen AIA
Design Principal



Kirsten Truesdell
Architectural Designer

08/21/23 JEFFERSON CITY CONFERENCE CENTER

- **CONCEPT FOR NEW 36K SF CONFERENCE & MEETING FACILITY, W/ CIRCULATION, PRE-FUNCTION, SUPPORT SPACES, & KITCHEN**
- **OTHER PROPOSED AMENITIES INCLUDE-**
 - 150-200 ROOM HOTEL WITH GYM, FITNESS CENTER, RESTAURANT ACCESS, COURTYARD, POOL & ROOFTOP BAR
 - RETAIL STOREFRONTS ON CAPITOL AVE & MADISON ST
 - ~750 STRUCTURED PARKING SPACES
- **PRIMARY CONFERENCE ACTIVITY ENTRANCE NEAR CORNER OF CAPITOL AVE & MADISON ST**
 - VIEWS ORIENTED TOWARD CAPITOL BUILDING
- **HOTEL ENTRANCE ON CAPITOL AVE**
 - OPTION TO LOCATE HOTEL RESTAURANT/LOUNGE IN GRADE-LEVEL RETAIL ON CAPITOL AVE NEAR ENTRANCE
- **PARKING ACCESS FOR ALL LEVELS FROM MONROE ST**
 - RETAIL DELIVERY ACCESS THROUGH GARAGE
- **LOADING ACCESS FOR CONVENTION ACTIVITIES AT COMMERCIAL AVE (ALLEY) LEVEL**
 - OPTIONAL PARCEL ACROSS ALLEY CAN BE USED TO FACILITATE LOADING TRAFFIC
- **MAX HEIGHT OF PROPOSED CONSTRUCTION ABOVE GRADE**
 - 6 - 7 STORIES, ~80'
 - 2 PARKING LEVELS BELOW GRADE
- **PROPOSED GLAZED CURTAIN WALL & MASONRY SCREEN WALLS FILTER NATURAL LIGHT AND PROVIDE CONTROLLED VIEWS FROM INTERIOR SPACES**
 - OPTIONAL INTEGRATED ILLUMINATED INFO DISPLAY & ART SCREENS POSSIBLE



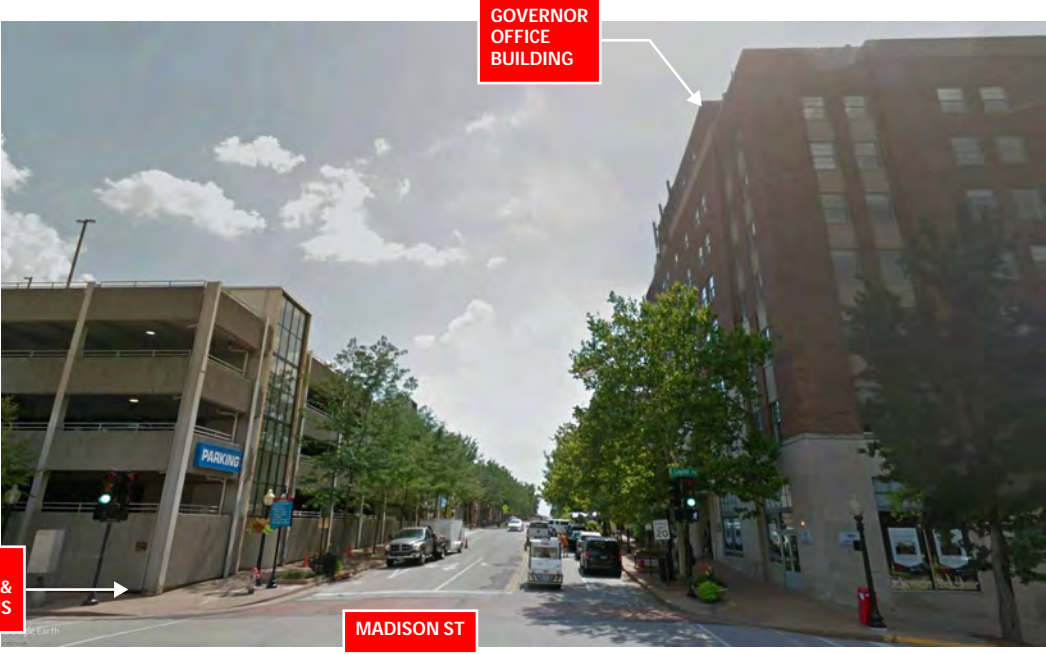
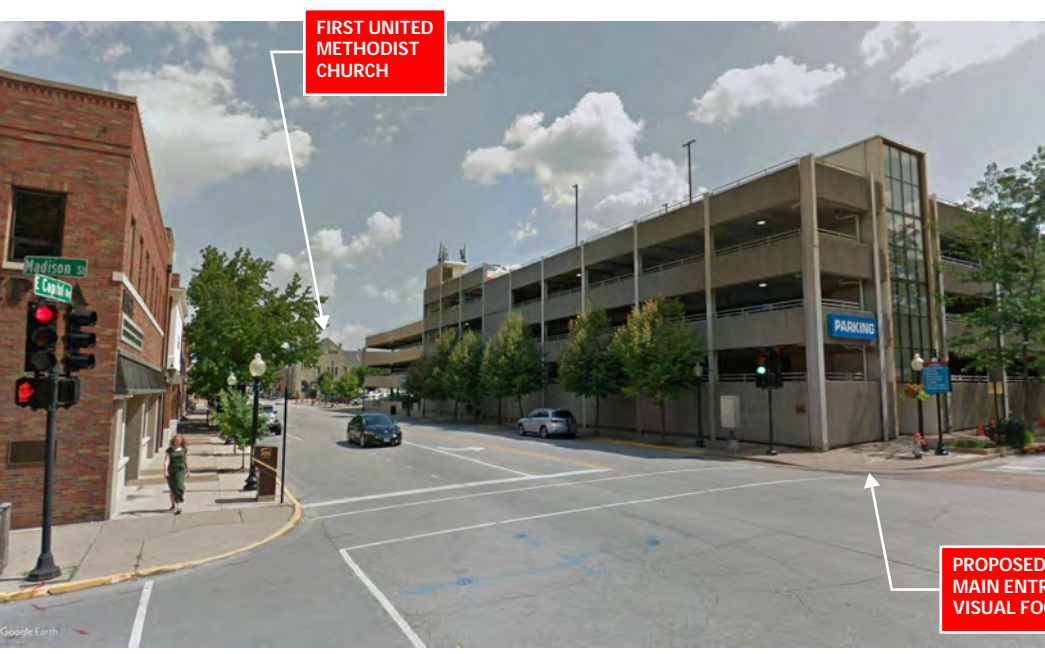
PROPOSED SITE FOR NEW CONFERENCE CENTER - EXISTING CONDITIONS





PROPOSED SITE FOR NEW CONFERENCE CENTER - EXISTING CONDITIONS





VIEWS FROM CORNER OF CAPITOL AVE & MADISON ST



VIEW FROM CORNER OF CAPITOL AVE & MONROE ST

PROPOSED SITE FOR NEW CONFERENCE CENTER - EXISTING CONDITIONS

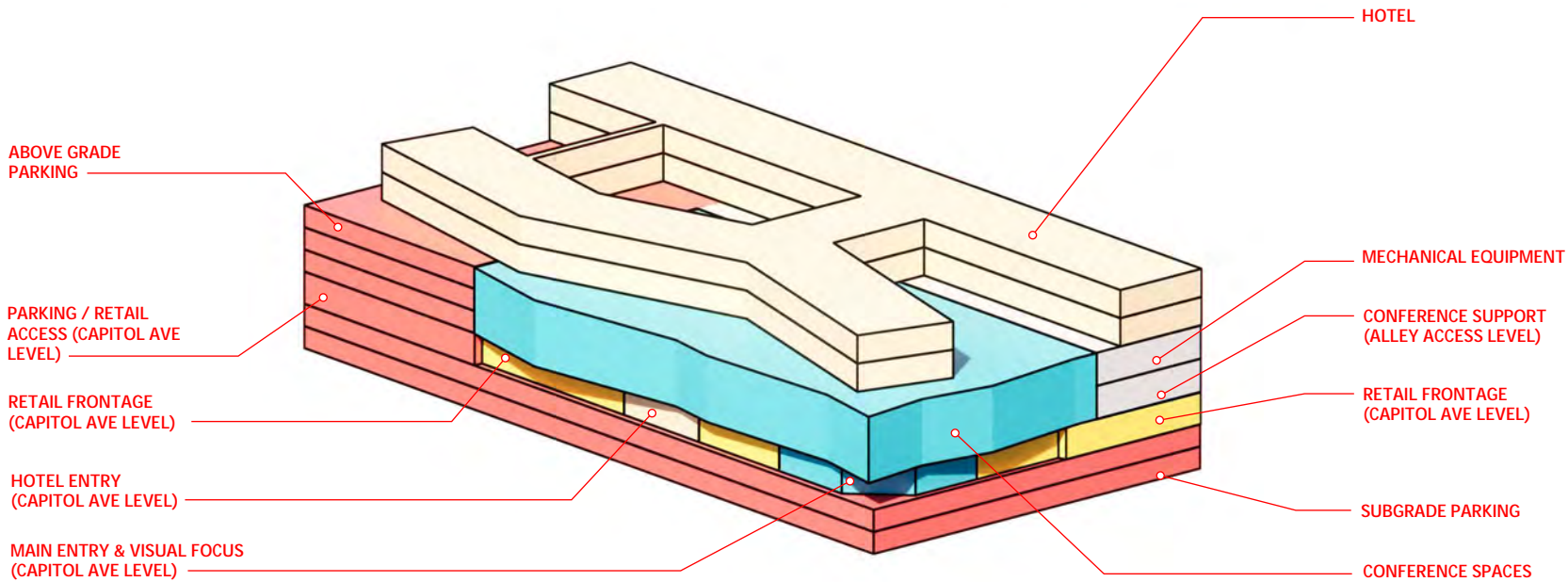
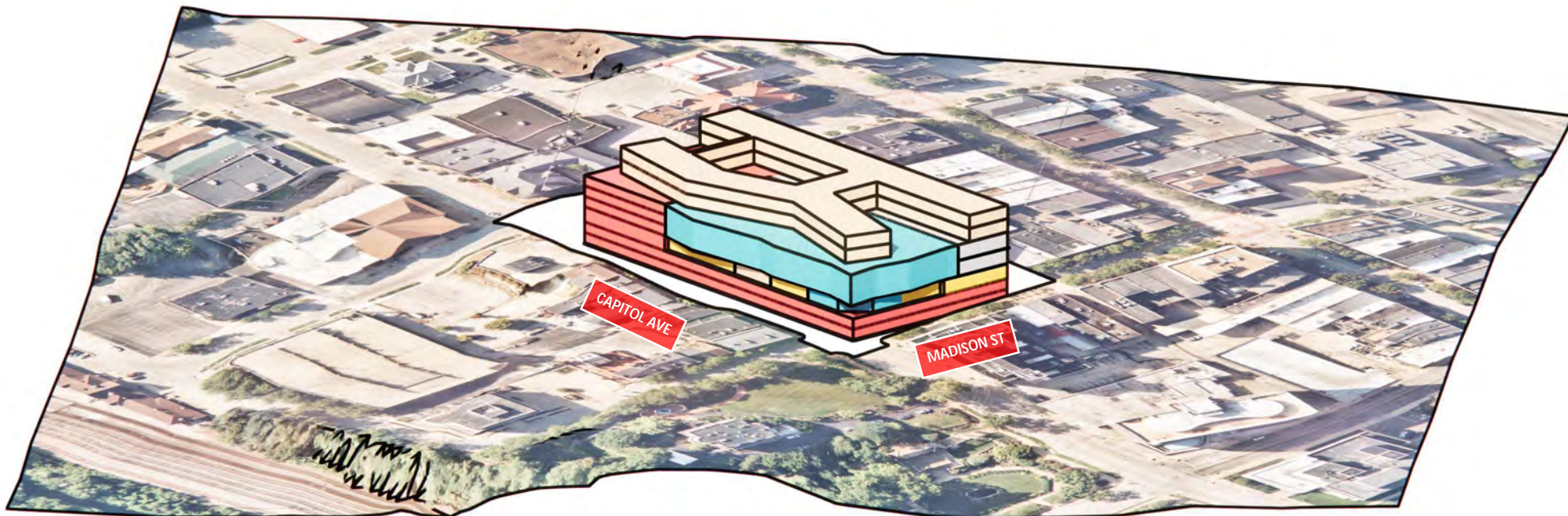




VIEWS OF COMMERCIAL AVE (ALLEY) ACCESS AT MADISON AND MONROE STREETS

PROPOSED SITE FOR NEW CONFERENCE CENTER - EXISTING CONDITIONS







CONCEPT VIEW FROM CORNER OF CAPITOL AVE & MADISON ST - WITH CURTAIN WALL GLAZING AT CONFERENCE AREAS



NEW CONFERENCE CENTER RENDERING - CONCEPT DESIGN

